



M O
O D

UK MADE

KITCHENS

A modern kitchen featuring grey shaker-style cabinets, a dark grey marble countertop, and a large glass-fronted display cabinet with internal lighting. The kitchen includes built-in ovens, a sink with a black faucet, and a backsplash made of large grey marble tiles. The overall design is clean and sophisticated.

UPLIFTING BY DESIGN

M | O
O | D
KITCHENS
UK MADE

CONTENTS

TIMELESS ELEGANCE

Sorrento	9
Sorrento Beaded	17
Hartland	25
Hamilton	33
Hereford	43
Linwood	51
Lavado Rye	59
Stanhope Classic	63

SLEEK AND SEAMLESS

Lamora	69
Stanhope Modern	79
Notrelle	81
Hartland	85
Verona	89
Imperia	101
Monaco	103

CONTEMPORARY CHIC

Verona	107
Imperia	113
Monaco	115
Feature Glazed	123

PLATINUM COLLECTION

Lyndhurst	127
Platinum Smooth Painted	143

BEYOND THE KITCHEN

Complementary furniture	161
-------------------------	-----

FINISHING TOUCHES

Door Collection	163
Made-to-measure Options	165
Colour Collection	167
Planning Your Kitchen	169
Storage	171
Worksurfaces	177
Handles	179
Handleless Trims	181
Lighting	183
Appliances	185

REAL KITCHENS

186

WELCOME TO MOOD

A MOOD Kitchen is uplifting by design.

From contemporary to classic, our extensive collection is designed to suit an array of budgets, spaces and styles, and is ready and waiting to help you create your perfect room.

Our approach is to always provide kitchens that are innovative, flexible and good quality – at an affordable price.

Available through a network of independent retailers nationwide, your local MOOD specialist will guide you through the entire process with the highest level of service and care.

With generations of experience, we’re confident we’ll craft a kitchen that fits flawlessly around you, and a lifestyle that you’ll enjoy for years to come.

M | O | O | D
KITCHENS
UK MADE



OUR INDEPENDENT PROMISE

TAILORED TO YOUR LIFESTYLE

Being independent means that everything we create is entirely unique to you - crafted to reflect your personality and the way you choose to live your life. Whether you have a flavour for contemporary styling or want to steep yourself in traditional comfort, we help you explore the widest ranges of door styles, materials, colours, textures and accessories to create a personal space that is truly yours.

TRUSTED SERVICE, INSPIRING DESIGN

The benefit of choosing a trusted, MOOD Kitchens specialist, lies in the personal, tailored service you'll receive. Listening to your ideas, tastes and lifestyle needs, with the knowledge to re-imagine the best use of your space, your MOOD designer will guide you through the entire process from start to finish, and work closely with you to create a beautiful, but hardworking design to suit your life both now and for many years to come.

AFFORDABLE QUALITY – ALWAYS

Quality should be an integral aspect of any kitchen or bedroom you choose to purchase - regardless of budget. Whether it is the construction, finish or design detail of our ranges, you can be sure that premium quality is our top priority. With this in mind you are free to concentrate on the look and feel of your new kitchen, confident that quality is always ingrained and comes as standard, every time.



TIMELESS ELEGANCE

Our Timeless Elegance collection fuses a deep understanding of today's lifestyles with British design heritage – created to work in any home. A classic collection for the modern era with timeless design appeal, you'll continue to enjoy these kitchens year after year.





SORRENTO

SHOWN IN IVES BLUE & INKWELL

Worksurface: Strata Quartz Strata Statuario
Handles: Heworth Bright Nickel Knob (K1119.30.BN)



SORRENTO

A timeless classic, ready and waiting to be made your own. With a distinctive ash-grain, our Sorrento collection is a charming staple for any home.

SHOWN IN DUST GREY



BESPOKE SIZES



SOLID WOOD/REAL WOOD VENEER

7 COLOURS AS STANDARD



PORCELAIN MATT



STONE MATT



DOVE GREY MATT



PARTRIDGE GREY MATT



DUST GREY MATT



GRAPHITE MATT



HARTFORTH BLUE MATT

+



FURTHER PAINTED COLOURS AVAILABLE
SEE PAGE 167/168

Worksurfaces: Strata Quartz Snowfall

Handles: Dartmouth Chrome T-bar Handle (H1123.60.CH) & D Handle (H1128.160.CH)

SORRENTO

SHOWN IN HARTFORTH BLUE

Right: The simple yet elegant design of our Sorrento, allows you to experiment with statement decor, such as eye-catching handles and decorative wall tiling - offering a contemporary feel in a traditional space.

Below: The subtle woodgrain beneath the rich hues of Hartforth Blue, adds a beautiful textured finish, creating a naturally authentic look.

Worksurfaces: Strata Quartz Marbled Grey
Handles: Claremont Antique Bronze Bar Handle (H1103.160.BR) & Knob (K1106.30.BR)





SORRENTO

SHOWN IN SLATE & PARTRIDGE GREY

Left: A landscape inspired colour palette can help create a rustic feel.

Below: With a simple frame, and distinctive handles, this look blends both the modern and traditional aesthetics perfectly.

Worksurfaces: Strata Quartz Hailstorm & Strata Timber Distressed
Handles: Weel Black Satin T-Bar Handle (H1091.60.BS) & Barton Black Satin Cup Handle (H1092.64.BS)





SORRENTO BEADED

SHOWN IN DUST GREY



SORRENTO BEADED

Featuring the finer trimmings of a traditional kitchen and an exquisite ash-grain finish, Sorrento Beaded cleverly explores the ornate detailing of a classic Shaker style, through the addition of an elegant bead.

SHOWN IN PORCELAIN

£ £ £



BESPOKE SIZES



SOLID WOOD/REAL
WOOD VENEER

7 COLOURS AS STANDARD



PORCELAIN
MATT



STONE
MATT



DOVE GREY
MATT



PARTRIDGE GREY
MATT



DUST GREY
MATT



GRAPHITE
MATT



HARTFORTH
BLUE
MATT

+



FURTHER PAINTED
COLOURS AVAILABLE

SEE PAGE 167/168

Worksurfaces: Strata Quartz Marbled White

Handles: Mayfair Pewter D Handle (H267.96.PE) & Stivichall Pewter Knob (K265.33.PE)

SORRENTO BEADED

SHOWN IN CASHMERE

Right: Open shelving provides decorative storage space for your everyday essentials and cherished possessions.

Below: A Kesseböhmer Tandem Larder brings the contents of your cupboards out towards you.

Worksurfaces: Strata Quartz Luna Pearl
Handles: Wellington Bright Nickel Cup Handle (H1079.32.BN) & Bright Nickel Knob (K1075.32.BN)





SORRENTO BEADED

SHOWN IN PIMENTO, STONE & PORCELAIN

Left: A calming palette of natural hues provides a perfect canvas to experiment with pops of colour, making a striking statement in any classic or modern setting.

Below: Turn the heart of your home into a welcoming social space, with the introduction of a feature island, complete with a decorative wine rack.

Worksurfaces: Strata Quartz Pietra Auburn & Strata Quartz Pietra Taupe
Handles: Harton Cup Handle (H1146.105.AGB), Harton Bow Handle (H1147.205.AGB) & Harton Knob Handle (K1118.31.AGB)





HARTLAND

SHOWN IN DOVE GREY

Worksurface: Sensa Granite Nilo
Handle: Claremont Black Industrial Matt D Handle (H1103.160.MB)



HARTLAND

An unassuming one-piece design, available in a choice of four trend-leading colours and further bespoke options, Hartland is a contemporary take on the classic Shaker.

With a narrow surround and a smooth painted finish, this sophisticated range is equally at home in any modern or traditional setting.

SHOWN IN PORCELAIN & HARTFORTH BLUE



BESPOKE SIZES

4 COLOURS AS STANDARD



PORCELAIN
MATT



DOVE GREY
MATT



DUST GREY
MATT



HARTFORTH
BLUE
MATT

+



FURTHER PAINTED
COLOURS AVAILABLE
SEE PAGE 167/168

Worksurfaces: Strata Quartz Absolute Marbled White
Handles: Knurled Aged Brass Bar Handles (H1126257B386AGB) & Knob Handles (K1111.20B384AGB)

HARTLAND

SHOWN IN PORCELAIN & HARTFORTH BLUE

Right: Acting as a striking centerpiece, this Hartland island has been designed to emulate the look of free-standing furniture; a nod to heritage design whilst remaining sleek and practical. This kitchen is perfect for entertaining friends, dining with family or simply enjoying a cup of tea on a Sunday morning.

Worksurfaces: Strata Quartz Absolute Marbled White
Handles: Knurled Antique Bronze Bar Handles (H1126.257B386BR) & Knob Handles (K1111.20B384BR)



HARTLAND

SHOWN IN PUTTY

Left: Open shelving and full height larder units ensure storage doesn't have to be sacrificed within a smaller space.

Below: The addition of ultra-stylish, minimalist trim handles, transform Hartland's classical aesthetic into a sleek and seamless design.

Worksurfaces: Dekton Kira Matt

Handles: Soho Matt Black Trim Handles (H1131.90.MB, H1131.250.MB)





HAMILTON

SHOWN IN PARTRIDGE GREY



HAMILTON

A simple Shaker with a smooth painted finish, Hamilton provides an ideal canvas to create a striking, quintessentially British look, or stay pared back to maintain a refined understated style.

SHOWN IN PARTRIDGE GREY & PORCELAIN



BESPOKE SIZES

6 COLOURS AS STANDARD



PORCELAIN
MATT



STONE
MATT



DOVE GREY
MATT



PARTRIDGE GREY
MATT



DUST GREY
MATT



HARTFORTH
BLUE
MATT

+



FURTHER PAINTED
COLOURS AVAILABLE
SEE PAGE 167/168

Worksurfaces: Strata Quartz Calacatta Gold
Handles: Barton Chrome Cup Handle (H1092.64.CH) & Chrome Knob (K265.33.CH)

HAMILTON

SHOWN IN COPSE GREEN

Right: Achieve a sophisticated, heritage feel to your design through the clever use of classic antique bronze cup handles and a dramatic Strata Quartz Calacatta Gold splashback.

Below: Our best-selling LeMans corner unit aims to banish dark corners, bringing all your kitchen essentials within reach.

Worksurface: Strata Quartz Calacatta Gold
Handles: Claremont Antique Bronze Cup Handle (H1105.64.BR) & Antique Bronze Knob (K1106.30.BR)





HAMILTON

SHOWN IN GRAPHITE & DOVE GREY

Left: The simplicity of Hamilton's design, paired with a neutral colour palette, allows you to experiment with bright, bold accents, to bring personality to your dream design.

Below: Open shelving and ornate tiling gives this look a classic yet fashionable aesthetic.

Worksurfaces: Strata Quartz Grey Venato
Handles: Claremont Antique Bronze Effect D Handle (H1103.160.BR)



HAMILTON

SHOWN IN HARTFORTH BLUE, SLATE & PARTRIDGE GREY

Right: Mix multiple colours and materials together to create a modern twist on this classic, simple Shaker.

Below: Create bespoke units to house appliances whilst adding additional storage space.

Worksurfaces: Silestone Quartz Yukon & Strata Timber Prime Oak
Handles: Arlington Bright Nickel Bar Handle (H503.128.BN)





HEREFORD

SHOWN IN DUST GREY & DOVE GREY

Worksurfaces: Strata Calacatta Silver
Handles: Harton Bright Nickel Knob (K1118, 31 BN) & Cup Handle (H1146, 105 BN)




HEREFORD


From one look comes an abundance of possibilities. With a wide frame design and subtly textured woodgrain finish, Hereford’s Shaker style can be dressed up or down, to suit any setting. A true timeless classic.


SHOWN IN PORCELAIN





10 COLOURS AS STANDARD


- 


CHALK
MATT
- 


PORCELAIN
MATT
- 


ALABASTER
CLASSIC
MATT
- 


SAGE
MATT
- 

STONE
MATT
- 

DOVE GREY
MATT
- 

PARTRIDGE GREY
MATT
- 

DUST GREY
MATT
- 

CHARCOAL
MATT
- 

HARTFORTH
BLUE
MATT

+



FURTHER PAINTED
COLOURS AVAILABLE
SEE PAGE 167/168

Worksurface: Strata Quartz Marbled White & Strata Timber Salvaged
Handles: Brafferton Knob (K562.32.BMS)

HEREFORD

SHOWN IN HARTFORTH BLUE

Right: The rich hues of Hartforth Blue work beautifully in this larger space. An intricate island, decorative dresser and accompanying dining table transform this kitchen into a stylish living area, perfect for entertaining or simply enjoying a cup of tea on a morning.

Below: A free-standing bespoke dresser offers a perfect place to house your everyday essentials whilst providing an elegant furniture piece that will truly stand the test of time.

Worksurface: Strata Quartz White Venato
Handles: Linton T-Bar Handle (H1120.60.CH) & Bar Handle (H1120.160.CH)





HEREFORD

SHOWN IN CHARCOAL

Left: Pair deep, dark tones such as Charcoal with light timber worksurfaces for a modern take on this classic design.

Below: Spend quality time with friends and family around a striking yet practical kitchen island.

Worksurface: Strata Quartz Mirror & Strata Timber Rubberwood
Handle: Filey Chrome Cup Handle (H716.128.CH)





LINWOOD

SHOWN IN INDIGO

Worksurface: Silestone Eternal Noir
Handles: Hoxton Black Industrial Matt Cup Handle (H1104.96.MB) & Claremont Black Industrial Matt Knob (K1106.30.MB)



LINWOOD

Available in four neutral hues, two on-trend deep tones and our full painted palette, this simple, affordable Shaker features a slightly narrower frame and woodgrain style finish, creating a contemporary twist on this classic style.

SHOWN IN DOVE GREY & GRAPHITE

£

6 COLOURS AS STANDARD



PORCELAIN
MATT



CASHMERE
MATT



DOVE GREY
MATT



DUST GREY
MATT



INDIGO
MATT



GRAPHITE
MATT

+



FURTHER PAINTED
COLOURS AVAILABLE
SEE PAGE 167/168

Worksurface: Strata Quartz Carrara Classic
Handles: Claremont Industrial Matt Black Knob (K1106.30.MB)

LINWOOD

SHOWN IN PORCELAIN

Right: The simplicity of Porcelain, provides a blank canvas in which to experiment with contrasting features such as a striking granite worktop and splashback.

Below: A Kesseböhmer Tandem Solo pull-out larder stores everything you need within easy reach.

Worksurface: Sensa Granite Ice Blue
Handles: Kirkby Stainless Steel Effect Bow Handle (H523.160.SS)





LINWOOD

SHOWN IN OLIVE

Olive green introduces earthy simplicity to this Linwood design, creating a beautiful, subtle statement that will work well in any setting.

Worksurface: Strata Quartz Mirror Pietra Icy White
Handle: Harton Aged Brass Bow Handle (H1147.205.AGB) Harton Aged Brass Knob Handle (K1118.31.AGB)





LAVADO RYE

SHOWN IN PUTTY & REGIMENT

Worksurface: Strata Granite Steel Grey & Strata Timber Iroko
Handles: Leeming Bright Nickel Bar (H1002.160.BN) & Bright Nickel T-Bar Handle (H1003.62.BN)



LAVADO RYE

Lavado Rye epitomises the simple values and clean design lines of the Shaker movement. Its unfussy style and natural appearance ensures this enduring look never goes out of fashion.

SHOWN IN NATURAL & ALABASTER



SOLID WOOD/REAL
WOOD VENEER

1 COLOUR AS STANDARD



NATURAL
RYE
MATT

+



FURTHER PAINTED
COLOURS AVAILABLE
SEE PAGE 167/168

Worksurface: Strata Quartz Quartz Mirror

Handle: Solid Pewter D Handle (H580.160.PE)



STANHOPE CLASSIC

LANGLEY SHOWN IN MATT BLUE CANVAS
& MATT DOVE GREY

Worksurface: Strata Granite Graphite Pearl
Handles: Reeth Chrome Knob (K113-45.CH)



STANHOPE CLASSIC

With a varied selection, Stanhope boasts a complete made-to-measure collection across three classic door styles, in a choice of matt, gloss, feature concrete and woodgrain effect finishes. Choose from a simple ever-popular Shaker, through to an eye-catching, traditional cathedral arch design.

MELDON SHOWN IN MATT PORCELAIN



MADE TO
MEASURE

Worksurface: Strata Timber Oak

Handle: Claremont Matt Black Knob (K1106.30.MB) & Vale Cup Matt Black Handle (H1110.64.MB)

TO VIEW THE FULL STANHOPE CLASSIC COLLECTION PLEASE SEE PAGE 165

MATT



PORCELAIN
MATT



DOVE GREY
MATT



CASHMERE
MATT



DUST GREY
MATT



BLUE CANVAS
MATT



INDIGO BLUE
MATT



THORPE GREEN
MATT



GRAPHITE
MATT



MATT BLACK
MATT

FEATURE



CONCRETE

GLOSS



PORCELAIN
GLOSS



CREAM
GLOSS



DOVE GREY
GLOSS



CASHMERE
GLOSS



DUST GREY
GLOSS

WOODGRAIN FINISH



SUPER WHITE



CREAM



GREY



MUSSEL



CASHMERE

SLEEK AND SEAMLESS

Practicality and style come together to create our seamlessly beautiful, handleless kitchen collection. Whether you opt for a 'true' handleless design with a trim, such as Verona, or an integrated j-pull, like our popular Lamorna range, our handleless kitchens are equally at home in any modern or traditional setting.





LAMORNA

SHOWN IN MATT PORCELAIN & GLOSS GRAPHITE



LAMORNA

Inspired by modern European styles, Lamorna’s contemporary yet minimalist design features a painted finish and an integrated j-pull handle, making it one of our most popular modern ranges. The added availability of bespoke elements makes Lamorna perfect for those searching for a clean, sleek and uncluttered look.

SHOWN IN MATT PORCELAIN



BESPOKE SIZES

8 COLOURS AS STANDARD



WHITE
MATT & GLOSS



PORCELAIN
MATT & GLOSS



CASHMERE
MATT & GLOSS



DOVE GREY
MATT & GLOSS



SILVER GREY
MATT & GLOSS



DUST GREY
MATT & GLOSS



GRAPHITE
MATT & GLOSS



HARTFORTH
BLUE
MATT

+



FURTHER PAINTED
COLOURS AVAILABLE
SEE PAGE 167/168

Worksurface: Strata Quartz Ash Grey with Strata Quartz White Venato splashback

LAMORNA

SHOWN IN MATT HARTFORTH BLUE
WITH MONACO HAYWARD CONCRETE

Right: The deep, rich tones of Hartforth Blue, work perfectly alongside a contrasting concrete effect, bringing the simplicity of Lamorna to life, whilst giving the ultimate modern look.

Below: Industrial inspired open shelving offers a versatile storage space to house your kitchen essentials, or simply show off those ornate decorate pieces, whilst adding a sleek and contemporary edge to your design.

Worksurface: Strata Quartz Barbican





LAMORNA

SHOWN IN MATT WHITE

Left: Experiment with bold metallic accents. Here, the simple beauty and clean lines of Lamorna Matt White contrast perfectly with luxury brushed brass accent features. Elaborate tiling and statement lighting complete the look.

Below: Little details can make all the difference. Lamorna benefits from additional bespoke options to open up a whole host of possibilities. Choose to carry Lamorna's integrated j-pull handle through drawers and doors for a streamlined and sleek look or include a 'stop' handle feature that is as distinctive as it is functional.

Worksurfaces: Strata Quartz Kemble Concrete



LAMORNA

SHOWN IN MATT REGENTS GREEN & MATT CARBON
WITH MONACO SEPIA GLADSTONE OAK

Right: The warming undertones of Regents Green combine beautifully with the bold dusky finishes of Carbon and Sepia Gladstone Oak, to create an industrial inspired statement, perfect for any setting.

Below: The sleek, slimline j-pull integrated handle is effortlessly accentuated by the smooth, earthy colourway of Regents Green.

Worksurfaces: Dekton Laurent





STANHOPE MODERN

Three eye-catching styles perfectly create Stanhope's handleless collection; from a simple Whitfield slab, to the curved saponetta style of Henshaw and finally the integrated handle design of Acomb.

Combining clean lines with a contemporary colour palette, this range is perfect for those looking to create a minimalist, handleless environment at an affordable price.

ACOMB SHOWN IN MATT PORCELAIN & FEATURE CONCRETE

£



MADE TO
MEASURE

Worksurface: Strata Quartz Marble Black

TO VIEW THE FULL STANHOPE MODERN COLLECTION PLEASE SEE PAGE 165

GLOSS



WHITE
GLOSS



CREAM
GLOSS



DOVE GREY
GLOSS



CASHMERE
GLOSS



HAZE
GLOSS

WOODGRAIN FINISH



SUPER WHITE



CREAM



GREY



MUSSEL



CASHMERE

MATT



PORCELAIN
MATT



DOVE GREY
MATT



CASHMERE
MATT



DUST GREY
MATT



BLUE CANVAS
MATT



INDIGO BLUE
MATT



THORPE GREEN
MATT



GRAPHITE
MATT



MATT BLACK
MATT

FEATURE



CONCRETE



NOTRELLE

SHOWN IN CHALK

Worksurface: Strata Quartz Statuario
Handleless Trim: Chalk



NOTRELLE

A classic look with a modern twist, Notrelle combines the fine frame detailing of a traditional Shaker with the contemporary, clean lines of a handleless door, to create a truly unique look.

Open these doors via a simple handleless trim, available in complementing painted colours or a contrasting Rye finish to create a unique look that will feel at home in any setting.

SHOWN IN STONE



1 COLOUR AS STANDARD



CHALK
MATT

+



FURTHER PAINTED
COLOURS AVAILABLE
SEE PAGE 167/168

HANDLELESS TRIM OPTIONS



CHALK



RYE

+



FURTHER PAINTED
COLOURS AVAILABLE
SEE PAGE 167/168

Worksurface: Strata Quartz Thunder Storm
Handleless Trim: Stone



HARTLAND

SHOWN IN CHARCOL & DOVE GREY

Worksurface: Strata Quartz Pietra Charcoal & Strata Quartz Pietra Silver
Handleless Trim: Graphite



HARTLAND

A unique take on the popular handleless design whilst still featuring elements from its Shaker heritage, Hartland is available in four popular colours, as well as a beautiful paint to order palette. With a sleek and practical feel, the refined detail of this range allows for a modern kitchen with an enduring and sophisticated appeal.

SHOWN IN COPSE GREEN & CASHMERE



BESPOKE SIZES

Worksurfaces: Strata Quartz Perlato
Handleless Trim: Brass

4 COLOURS AS STANDARD



PORCELAIN
MATT



DOVE GREY
MATT



DUST GREY
MATT



HARTFORTH
BLUE
MATT

+



FURTHER PAINTED
COLOURS AVAILABLE
SEE PAGE 167/168

HANDLELESS TRIM OPTIONS



ALUMINIUM



MATT WHITE



MATT GRAPHITE



COPPER



BRASS



VERONA

SHOWN IN GLOSS DOVE GREY & MATT REGIMENT



VERONA

Verona, our best-selling contemporary slab offers a simple, linear design for an ultra-modern, minimalist look. Paired here with a brass trim that not only acts as your hidden handle, but as a feature in itself - designed to edge and accent your whole look. Effortlessly stylish and practical, this painted handleless range creates a modern space that fits perfectly around you and your lifestyle.

SHOWN IN GLOSS DOVE GREY & MATT REGIMENT



BESPOKE SIZES

Worksurfaces: Strata Quartz Carrera Gioia
Handles: Hessay Brass D Handle (Hn33, 320.BHB)
Handleless Trim: Brass

8 COLOURS AS STANDARD



WHITE
MATT & GLOSS



PORCELAIN
MATT & GLOSS



CASHMERE
MATT & GLOSS



DOVE GREY
MATT & GLOSS



SILVER GREY
MATT & GLOSS



DUST GREY
MATT & GLOSS



GRAPHITE
MATT & GLOSS



HARTFORTH
BLUE
MATT

+



FURTHER PAINTED
COLOURS AVAILABLE
SEE PAGE 107168

HANDLELESS TRIM OPTIONS



ALUMINIUM



MATT WHITE



MATT GRAPHITE



COPPER



BRASS

VERONA

SHOWN IN MATT HARTFORTH BLUE & GLOSS PORCELAIN

Right: Pairing perfectly with our wide selection of trend-leading colours, a metallic handleless trim will ensure you can achieve a truly unique space whilst remaining simple and understated.

Below: A timber breakfast bar can add a striking yet functional difference to your dream design, whilst providing a warming edge to this contemporary look.

Worksurfaces: Strata Quartz Elegant Cream & Strata Oak Herringbone
Handleless Trim: Copper





VERONA

SHOWN IN MATT HARTFORTH BLUE & GLOSS PORCELAIN

Left: Used to create a beautifully bold one-colour design, or alongside neutral shades for a pared back look, Hartforth Blue can transform any kitchen into a modern abode.

Below: Don't just let your love for metallics stop at accent trims; include a statement sink to perfectly complete this striking design.

Worksurface: Strata Quartz Elegant Cream & Strata Oak Herringbone
Handleless Trim: Copper





VERONA

SHOWN IN CARBON WITH IMPERIA DEEP OAK

Left: Carbon, our off-black hue, works perfectly as a single colourway across an entire kitchen to create a rich atmospheric space with a softer edge.

Below: The true handleless design can be carried around an island or peninsular to create a seamless, signature look.

Worksurface: Dekton Ultra Compact Domoos
Handleless Trim: Graphite
Handles: Hove Matt Black D Handle (H1130.320.MB)



VERONA

SHOWN IN GLOSS WHITE WITH IMPERIA SMOKED LARCH

Right: An aluminium handleless trim accentuates the clean linear design of Verona.

Below: A full bank of Imperia woodgrain feature doors can easily pair with Verona to introduce texture to your design, whilst creating a stylish focal point.

Worksurfaces: Strata Quartz Brilliant White, Dekton Ultra Compact Orix & Strata Timber Oak End Grain
Handleless Trim: Aluminium
Handles: Rainton Stainless Steel D Handle (H1139.320.SS)





IMPERIA

The inherent natural beauty of Imperia, combined with an eye-catching handleless trim, emphasises the unique aspects of a truly bespoke kitchen.

Utilising real timber veneers and highly distinctive, heavily textured finishes, combined with made-to-measure sizes, ensures this collection is adaptable to any part of the home. Whether as a full kitchen or offset against a painted finish, Imperia has its roots firmly in both nature and cutting-edge design.

SHOWN IN DEEP OAK



MADE TO MEASURE



REAL WOOD VENEER

AVAILABLE IN THE FOLLOWING FINISHES



NATURAL OAK



MID OAK



SMOKED LARCH



SMOKED OAK



DEEP OAK



BURNT ASH

HANDLELESS TRIM OPTIONS



ALUMINIUM



MATT WHITE



MATT GRAPHITE



COPPER



BRASS

Worksurface: Dekton Ultra Compact Vera
Handleless Trim: Graphite



Worksurface: Strata Quartz Premium black
Handleless Trim: Graphite

MONACO

Say hello to Monaco, our bespoke handleless made-to-measure range that will allow you to maximise every inch of space in your kitchen.

With flexibility at the heart of this design, it has been specifically developed in an extensive choice of colours, finishes and edge options, to work around you and your environment, no matter the shape or size.

SHOWN IN SUPERMATT GRAPHITE & SUPERMATT LIGHT GREY



HANDLELESS TRIM OPTIONS

- 

ALUMINIUM
- 

MATT WHITE
- 

MATT GRAPHITE
- 

COPPER
- 

BRASS

AVAILABLE IN THE FOLLOWING FINISHES

- 

PURE WHITE
MATT & GLOSS
- 

CASHMERE
MATT & GLOSS
- 

LIGHT GREY
MATT & GLOSS
- 

DUST GREY
MATT & GLOSS
- 

GRAPHITE
MATT & GLOSS
- 

PEBBLE GREY
MATT
- 

INDIGO BLUE
MATT
- 

BLACK
WOODGRAIN
- 

FJORD METALLIC
GLOSS
- 

GOLD METALLIC
GLOSS
- 

CHARACTER
GRAPHITE
WOODGRAIN
- 

RECLAIMED OAK
WOODGRAIN
- 

WHITE HALIFAX
OAK
WOODGRAIN
- 

NATURAL DAVOS
OAK
WOODGRAIN
- 

SEPIA GLADSTONE
OAK
WOODGRAIN
- 

BRUNSWICK
CONCRETE
- 

HAYWARD
CONCRETE
- 

TRELICK
CONCRETE

EDGE OPTIONS

You even have the choice of door edge: go with a two-tone 3D glass effect, matching edges for the seamless look or multiplex edging.

- 

MATCHING EDGE FOR
SEAMLESS FINISH
- 

TWO-TONE 3D GLASS
EFFECT FOR A CON-
TRASTING LOOK
- 

MULTIPLEX EDGING FOR
A UNIQUE STYLE

WOODGRAIN & CONCRETE EFFECT FINISH ONLY AVAILABLE IN MATCHING EDGE.

CONTEMPORARY CHIC

Our Contemporary Chic collection is designed with the demands of today's living in mind. A stunning choice of contemporary kitchen designs enable you to reflect your personality and create smart and stylish spaces that work for you and your life – with no compromise on quality, functionality or practicality.





VERONA

SHOWN IN GLOSS DUST GREY WITH IMPERIA MID OAK



VERONA

Available in eight striking shades, and further painted colours, our best-selling modern range can be paired with a wide selection of ultra-stylish handles to inject your own personality and style.

Offering the perfect canvas to unleash minimalist styling, Verona is sophisticated yet functional; working well on its own or combined with a contrasting feature door, to create a timeless, contemporary space, that is perfect for any home.

SHOWN IN GLOSS WHITE



BESPOKE SIZES

8 COLOURS AS STANDARD



WHITE
MATT & GLOSS



PORCELAIN
MATT & GLOSS



CASHMERE
MATT & GLOSS



DOVE GREY
MATT & GLOSS



SILVER GREY
MATT & GLOSS



DUST GREY
MATT & GLOSS



GRAPHITE
MATT & GLOSS



HARTFORTH
BLUE
MATT

+



FURTHER PAINTED
COLOURS AVAILABLE
SEE PAGE 16/168

Worksurfaces: Strata Quartz Morning Frost & Corian Solid Surface Domino Terrazzo splashback
Handles: Soho Matt White Trim Handles (H1131.90.MW)



VERONA

SHOWN IN MATT DRY ROSE

Left: Verona's simplicity is the perfect canvas for a wide variety of colours.

Below: Open shelving provides the ideal place to store everyday cooking essentials, whilst adding a touch of refined industrial styling.

Worksurface: Strata Quartz Strata Marquina
Handle: Matt Black Knurled (K1111.20B384MB, H1126.257B386MB)





IMPERIA

Combine Imperia with a sleek handle to add a sophisticated style to any modern kitchen. Heavily inspired by nature, Imperia is available in six textured finishes. Whether you choose to mix it with other painted colours to create a stunning, unique look, or as a full standalone kitchen to make a lasting impression, this made-to-measure collection can be designed around your individual style.

SHOWN IN SMOKED LARCH

£ £ £ £ £



AVAILABLE IN THE FOLLOWING FINISHES



Worksurfaces: Strata Quartz Brilliant White, Dekton Orix & Oak End Grain
Handles: Rainton Stainless Steel D Handle (H1139.320.SS)



MONACO

SHOWN IN FJORD METALLIC GLOSS & MATT WHITE

Worksurface: Strata Quartz Absolute Marble White
Handles: Fell Stainless Steel Trim Handle (H1088.160.SS)



MONACO

Paired with a simple knob for an effortlessly clean, streamlined aesthetic, Monaco is perfect for a modern-day kitchen design.



No matter how big or small your space may be, our bespoke made-to-measure collection is designed with flexibility in mind, helping to achieve a truly unique look to your precise requirements, without the need to compromise on your dream style.

SHOWN IN MATT INDIGO BLUE & BRUNSWICK CONCRETE



Worksurface: Strata Quartz Kemble Concrete
Handles: Knurled Matt Black Knob (K117.32.MB)

AVAILABLE IN THE FOLLOWING FINISHES

 PURE WHITE MATT & GLOSS	 CASHMERE MATT & GLOSS	 LIGHT GREY MATT & GLOSS	 DUST GREY MATT & GLOSS	 GRAPHITE MATT & GLOSS	 INDIGO BLUE MATT	 PEBBLE GREY MATT	
 FJORD METALLIC GLOSS	 GOLD METALLIC GLOSS	 CHARACTER GRAPHITE WOODGRAIN	 RECLAIMED OAK WOODGRAIN	 WHITE HALIFAX OAK WOODGRAIN	 NATURAL DAVOS OAK WOODGRAIN	 SEPIA GLADSTONE OAK WOODGRAIN	 BLACK WOODGRAIN
 BRUNSWICK CONCRETE	 HAYWARD CONCRETE	 TRELICK CONCRETE					

EDGE OPTIONS

You even have the choice of door edge: go with a two-tone 3D glass effect, matching edges for the seamless look or multiplex edging.

		
MATCHING EDGE FOR SEAMLESS FINISH	TWO-TONE 3D GLASS EFFECT FOR A CONTRASTING LOOK	MULTIPLEX EDGING FOR A UNIQUE STYLE

WOODGRAIN & CONCRETE EFFECT FINISH ONLY AVAILABLE IN MATCHING EDGE.



MONACO

SHOWN IN PEBBLE GREY MATT & TRELICK CONCRETE

Left: Make the most of small spaces through bespoke floor-to-ceiling units, tailored shelving and a free-standing peninsular table.

Below: Choose a concrete finish for a highly interesting texture which can be complemented by matching handles and worksurfaces.

Worksurface: Strata Quartz Trinity Concrete
Handles: Justice Concrete Effect Block Handle (H1151.128.CT) & Soho Matt Black Trim Handle (H1131.250.MB)





MONACO

SHOWN IN DUST GREY MATT WITH MUTLIPILEX EDGING

Left: A strikingly unique kitchen, pairing a muted colour palette with a contrasting edge detail, offering a clean yet modern look.

Below: A smooth, two-toned slimline structure provides a perfect contemporary base to experiment with bolder statements.

Worksurface: Dekton Ultra Compact Korus
Handles: Lloyd Matt Black Knob (K1124.25.MB) & Lloyd Matt Black D Handle (H1156.160.MB)





FEATURED GLAZED

Perfectly suited to a contemporary setting, Glazed doors can add a striking accent piece to any kitchen design. Available in a choice of clean black or bronze styles, they work especially well within a handleless context for a seamless, ultra-modern look.

Alternatively, for those wishing to maximise natural light whilst retaining privacy, our fluted, vertical reeded glass design offers just a partial view into the cabinet.

Left: Black Fluted Glazed
Right Top: Black Glazed
Right Bottom: Bronze Glazed

AVAILABLE IN THE FOLLOWING FINISHES



BLACK FLUTED
GLAZED



BLACK
GLAZED



BRONZE
GLAZED

PLATINUM COLLECTION

Our Platinum collection is a timeless range of kitchens designed to be perfectly tailored to your lifestyle. Whether you opt for a modern or classic look, these in-frame kitchens are meticulously handcrafted from the finest solid timber for the highest quality finish and an enduring appeal.

M

O

O

D



LYNDHURST

SHOWN IN DUST GREY



LYNDHURST

Influenced by period furniture, Lyndhurst cleverly fuses a simple Shaker look with a traditional framed design, for a unique and sophisticated appearance.

Available in a choice of two colours as standard and further painted options, this beautiful range features a distinctly noticeable woodgrain finish, paired with delicate Ovolo beading, to create a kitchen design bursting with character.

SHOWN IN DUST GREY

£ £ £ £ £



BESPOKE SIZES



SOLID WOOD/REAL WOOD VENEER

2 COLOURS AS STANDARD



PORCELAIN MATT



DUST GREY MATT

+



FURTHER PAINTED COLOURS AVAILABLE
SEE PAGE 167/168

Worksurfaces: Dekton Ultra Compact Bergen Stonika Polished
Handles: Fenwick Chrome Cup Handle (H1122.160.CH, H1122.320.CH) & Knob (K265.33.CH)

LYNDHURST

SHOWN IN HARTFORTH BLUE

Right: The deep and dramatic hues of Hartforth Blue combine perfectly with Herringbone flooring, to create a rich and warm aesthetic. The addition of an eye-catching glazed dresser unit provides a stunning storage area, whilst adding a point of difference to this beautiful space.

Below: A modern take on the traditional Belfast sink gives this kitchen a contemporary edge.

Worksurfaces: Silestone Quartz Eternal Sernena Suede & Strata Timber Select
Handles: Hoxton Antique Bronze Effect Cup Handle (H1104.96.BR) & Weel Antique Bronze Effect Knob (H1091.60.BR)





LYNDHURST

SHOWN IN HARTFORTH BLUE

Left: Make clutter a thing of the past with a built-in appliance bank - helping to maximise your space and offering an abundance of storage.

Below: The decorative detailing of Lyndhurst lends itself perfectly to the introduction of rustic accessories, such as our bronze cup and knob handles.

Worksurfaces: Silestone Quartz Eternal Serena Suede
Handles: Hoxton Antique Bronze Effect Cup Handle (H1104.96.BR) & Weel Antique Bronze Effect Knob (H1101.60.BR)





LYNDHURST

This statement kitchen makes the most of the generous space available, with an inspiring island centrepiece, beautiful pantry unit and a feature appliance bank, all designed to make a lasting impression. A soft, refined colour palette, combined with elegant features brings the traditional design of Lyndhurst right up-to-date.

SHOWN IN DOVE GREY & REGIMENT

£ £ £ £ £



BESPOKE SIZES



SOLID WOOD/REAL WOOD VENEER

2 COLOURS AS STANDARD



PORCELAIN MATT



DUST GREY MATT

+



FURTHER PAINTED COLOURS AVAILABLE
SEE PAGE 167/168

Worksurfaces: Caesarstone Quartz Primordia
Handles: Highbury Aged Brass Cup Handle (H1138.160.AGB, H1138.320.AGB) & Stivichall Aged Brass Knob (K266.33.AB)



Doors: Lyndhurst Porcelain
Worksurfaces: Caesarstone Quartz Primordia
Handles: Highbury Aged Brass Cup Handle (H1138.160.AGB, H1138.320.AGB) & Stivichall Aged Brass Knob (K266.33.AB)



Doors: Lyndhurst Porcelain
Worksurfaces: Caesarstone Quartz White Attica Polished
Handles: Vale Matt Black Cup Handle (H1110.64.MB) & ClaLamornant Matt Black Knob (K1106.30.MB)



Doors: Lyndhurst Porcelain
Worksurfaces: Caesarstone Quartz White Attica Polished
Handles: Vale Matt Black Cup Handle (H1110.64.MB) & ClaLamornant Matt Black Knob (K1106.30.MB)



PLATINUM SMOOTH PAINTED

SHOWN IN CHARCOAL, CHALK AND PARTRIDGE GREY



PLATINUM SMOOTH PAINTED

The Platinum Painted collection is a range of classic smooth-painted timber kitchens, crafted to meet the aesthetic and functional demands of the 21st century and any style of home. With both traditional Shaker and a contemporary Slab options, all built within a traditional, in-frame construction these door styles work equally well on their own or combined to create a style unique to you. Each kitchen can be finished with an extensive palette of stunning colours, intricate beading options, door furniture and handles, resulting in a truly individual kitchen, from cleverly detailed opulence, to simple, understated sophistication.

SHOWN IN CHARCOAL, CHALK AND PARTRIDGE GREY

£ £ £ £ £



BESPOKE SIZES



SOLID WOOD/REAL WOOD VENEER

35 PAINT TO ORDER COLOURS AS STANDARD



FURTHER PAINTED COLOURS AVAILABLE
SEE PAGE 167/168



PLATINUM SMOOTH PAINTED

HALF PENCIL AND SCALLOPED

SHOWN IN CHARCOAL, CHALK AND PARTRIDGE GREY

Left: The most detailed of our three door styles blends beautifully into this period home, with the design carried through to the boot room, glimpsed through part-glazed doors.

Below: The island features an end-grain chopping block above slatted timber open storage, partially on raised legs for a traditional free-standing look. Timber is also used as the principal island worktop, also incorporating a breakfast bar and statement herb and champagne trough.





PLATINUM SMOOTH PAINTED

IN-FRAME SHAKER

SHOWN IN MUSSEL AND SAGE

Left: Our classic In-frame Shaker door style offers a distinctly timeless look, shown here in a neutral palette, perfectly suiting a modern family home.

Below: The pantry has an independent, free-standing look. Adding to the bespoke feel are quadrant curves, softening the overall effect and providing generous corner storage. The pilasters have been pulled forward to add detail to the cornices, worktops and plinths.





PLATINUM SMOOTH PAINTED

IN-FRAME QUARTER ROUND

SHOWN IN CHALK BLUE AND PORCELAIN

Left: Simple and functional, ‘quarter of a round’ beading was traditionally used to soften the classic Shaker profile. The Chalk Blue shown here is inspired by nineteenth-century colour palettes; contributing to the light and airy feel are wall cupboards which feature mirrored backs and are painted an off-white to co-ordinate with the tiles, walls and sink.

Below: Open island shelving offers a functional yet decorative feature area for both practical storage as well as somewhere to proudly display your treasured items.





PLATINUM SMOOTH PAINTED

IN-FRAME SLAB

SHOWN IN GRAPHITE AND PORCELAIN

Left: Beautifully understated, our purest of door styles offers simple detailing. Linearity and a strong perspective give a more contemporary look.

Ideally suited to those with minimalist tastes, the use of clean lines in balanced proportions complement many architectural styles.

Below: Square feature posts are used to great effect on the island to create a free-standing piece of furniture at the heart of the kitchen, adding to the informality of the scheme.





PLATINUM SMOOTH PAINTED

INFRAME-SLAB AND INFRAME-SHAKER

SHOWN IN TRUFFLE AND CASHMERE

Left: A perfect blend of classic and contemporary design is achieved through the combination of the in-frame Shaker and in-frame Slab doors. Classic detailing combined with understated elegance achieves a truly modern-classic look and feel.

Below: A warm, understated colour palette exudes an inviting ambience. Subtle hints of gold and bright nickel add to the luxurious palette of materials, including statement back-lit quartz splash-back and breakfast bar.







BEYOND THE KITCHEN

Open plan living spaces are becoming ever more popular, for the sociable, warm and open atmosphere they encourage and their multi-functional nature. Creating a fluid space which binds both rooms and people together, the kitchen becomes the focal point in the home and is the key area in the house that people are drawn to.

Our 'Beyond the Kitchen' concept allows ease of continuity between various living zones with the introduction of complementary furniture pieces such as media units, sideboards, coffee and side tables. We hope that you find plenty of inspiration throughout the brochure to help you make the perfect choice for your home and lifestyle.



COMPLEMENTARY FURNITURE



OUR COLLECTION

Create your perfect kitchen and your own signature look, from our extensive collection of modern and classic door styles.

Choose from over sixty different colours and finishes available as standard. Or, for a really personalised look, choose any shade from our paint-to-order palette, to create a kitchen that really reflects your individual character and taste.

£
PRICE BAND 1

LINWOOD

6 COLOURS AS STANDARD + P















MORE COLOURS ALSO AVAILABLE THROUGH PAINT-TO-ORDER. SEE PAGE 167/168

ALSO AVAILABLE IN BESPOKE SIZES

FOR MORE INFORMATION REGARDING PRICE BANDS PLEASE SPEAK TO YOUR MOOD SPECIALIST



£
£
PRICE BAND 2

HEREFORD

10 COLOURS AS STANDARD + P























VERONA

8 COLOURS AS STANDARD + P





















£
£
£
PRICE BAND 3

HAMILTON

6 COLOURS AS STANDARD + P















NOTRELLE

1 COLOUR AS STANDARD + P







£
£
£
PRICE BAND 3

SORRENTO

7 COLOURS AS STANDARD + P



















SORRENTO BEADED

7 COLOURS AS STANDARD + P



















£
£
£
£
PRICE BAND 4

LAMORNA

8 COLOURS AS STANDARD + P





















HARTLAND

4 COLOURS AS STANDARD + P













£
£
£
£
PRICE BAND 4

LAVADO

1 COLOUR AS STANDARD + P





£
£
£
£
£
PRICE BAND 5

LYNDHURST

2 COLOURS AS STANDARD + P









PLATINUM SMOOTH PAINTED

35 PAINT TO ORDER COLOURS AS STANDARD + P







SLAB

SHAKER

PAGE 163 | MOOD KITCHENS

M O
O D

MADE-TO-MEASURE OPTIONS



Our collection of made-to-measure ranges offer the ultimate in design flexibility. Consisting of three distinctive ranges, Monaco, Stanhope and Imperia, our made-to-measure collection includes a vast array of styles, colours and finishes, so you can create bespoke kitchens to suit your individual needs, no matter the space.

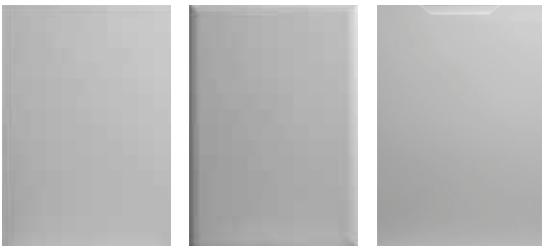
£ PRICE BAND 1



BOLAM
ONE PIECE SHAKER

LANGLEY
SHAKER WITH OVOLO DETAIL

MELDON
CATHEDRAL ARCH



WHITFIELD
SQUARE SLAB

HENSHAW
SAPPIONETTA SLAB

ACOMB*
INTEGRATED HANDLE

MATT



GLOSS

*ACOMB NOT AVAILABLE IN GLOSS FINISHES



WOODGRAIN FINISH



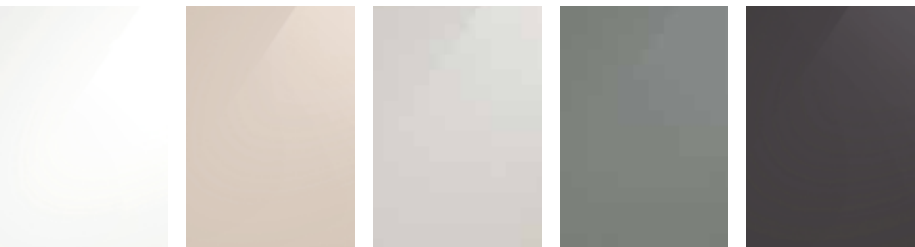
FEATURE



SUPER WHITE

£ PRICE BAND 1

MONACO



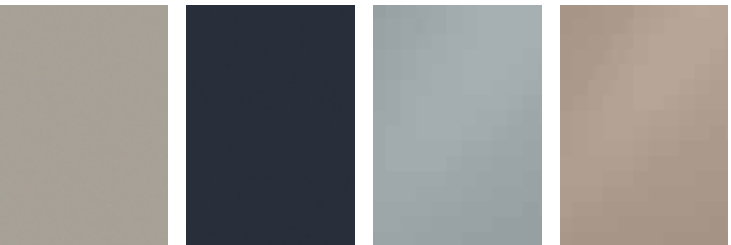
PURE WHITE
MATT & GLOSS

CASHMERE
MATT & GLOSS

LIGHT GREY
MATT & GLOSS

DUST GREY
MATT & GLOSS

GRAPHITE
MATT & GLOSS



PEBBLE GREY
MATT

INDIGO BLUE
MATT

FJORD METALLIC

GOLD METALLIC



WHITE HALIFAX OAK
WOODGRAIN

NATURAL DAVOS OAK
WOODGRAIN

RECLAIMED OAK
WOODGRAIN

SEPIA GLADSTONE OAK
GLOSS

CHARACTER GRAPHITE
WOODGRAIN

BLACK ASH
WOODGRAIN



BRUNSWICK
CONCRETE

HAYWARD
CONCRETE

TRELICK
CONCRETE

£
£
£
£
£ PRICE BAND 5

IMPERIA



NATURAL OAK

SMOKED LARCH

SMOAKED OAK

MID OAK

DEEP OAK

BURNT ASH

EDGE OPTIONS

You even have the choice of door edge: go with a two-tone 3D glass effect, or matching edges for the seamless look.



MATCHING EDGE FOR
SEAMLESS FINISH



TWO-TONE 3D
GLASS EFFECT FOR A
CONTRASTING LOOK



MULTIPLY EDGING
FOR A UNIQUE STYLE

COLOUR COLLECTION

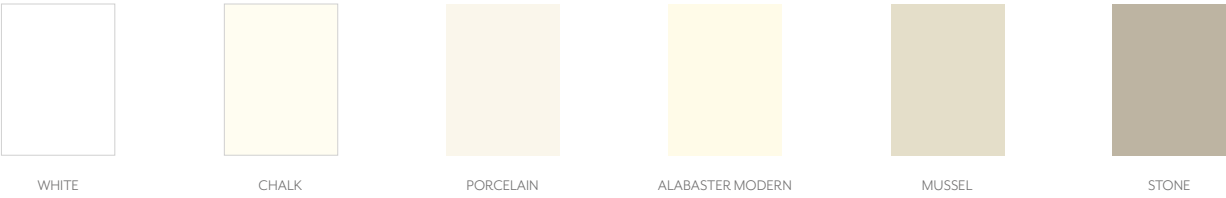
PAINTED-TO-ORDER

Inject personality into your kitchen with a colour palette that reflects your individual style.

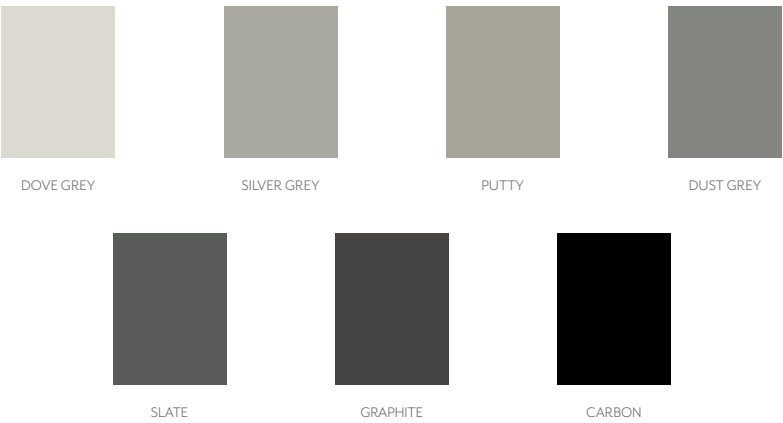
It’s easy to create a look that is truly yours – painted upon your request, just for you. Whether you dream of creating a seamless, minimal canvas or unleashing a striking statement through bold rich shades, our collection of 35 beautiful hues, will fit flawlessly into your lifestyle.

Visit us in store to explore our selection up close.

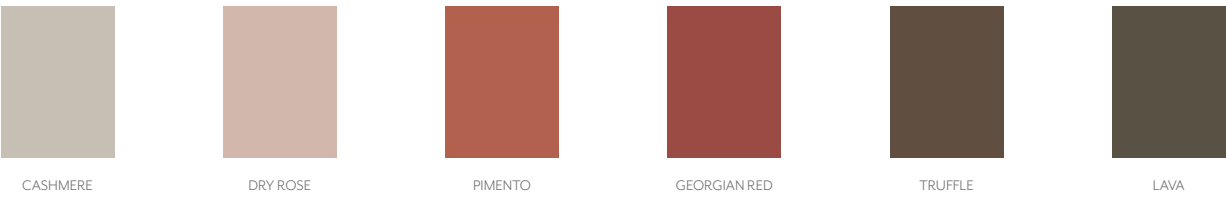
NEUTRALS



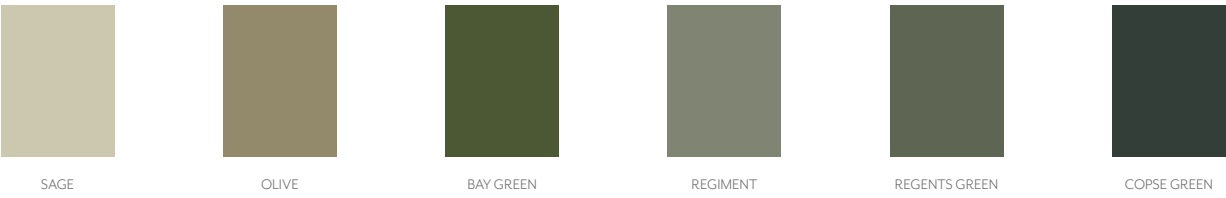
GREYS



WARM NEUTRALS

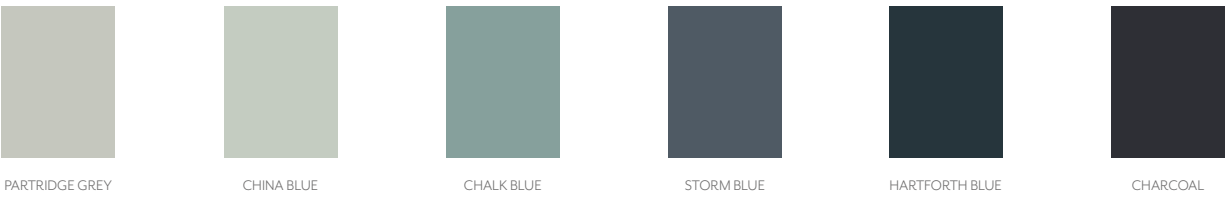


OLIVE GREENS

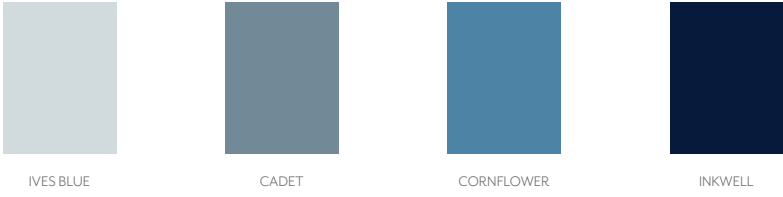


FOREST GREENS

GREEN BLUES



INK BLUES



LOOK OUT FOR THIS SYMBOL WHERE DOOR FAMILIES ARE AVAILABLE IN OUR FULL PAINT-TO-ORDER PALETTE

NOTE: Whilst every effort has been made to accurately represent painted colours, actual product colours may vary slightly from colours shown in this brochure.

If opting for a dark kitchen, it is worth noting that darker shades can show up fingerprint marks more easily than lighter finishes, however these are easily removed with a soft Microfibre anti-scratch cloth.

PICTURE YOUR DREAM KITCHEN IN YOUR HOME

Designing the most important room in your home requires careful planning, and should be centred around the things that are most important to you and your lifestyle.

A smart and efficient layout is key to embracing and supporting this - and will help ensure that your new kitchen is not only beautiful and enjoyable, but also practical, flexible and adaptable to your needs for years to come.

Your MOOD designer is there to guide you through the whole process during your personal design consultation - listening to your ideas, providing expert advice, reimagining your space, tailoring your design completely to you – and helping you picture your new, dream kitchen in your home.

In the meantime, here are our top considerations for choosing the best kitchen layout to maximise your space, flow and function – based on a variety typical of spaces*.

THE UPDATE



APPROX. KITCHEN DIMENSIONS
3m WIDTH 3m DEPTH

A good starting point is often considering whether an update to your kitchen without increasing the floor space will meet your needs. This is often a popular choice in smaller, or single room kitchens where the existing kitchen space works, but the style and placement of the furniture, fixtures and fittings requires an update - along with the need for extra functionality and new technology.

Ideal for separating your cooking area from other adjacent spaces, a single room kitchen in a typical semi-detached footprint lends itself well to a simple U shaped layout.

Although compact, a U shape helps to maximise your wall space, allowing the use of full height cabinetry or full runs of upper and lower cabinets on up to two of your walls.

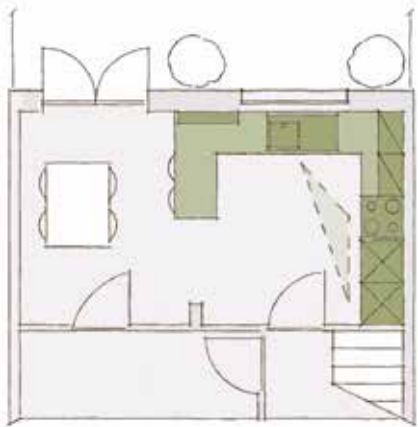
Of course, other layouts can work equally as well in single room kitchens – such as a double galley or an L shape – but assessing the optimum layout for your individual space is all part of your MOOD design consultation.

**ACHIEVE THE
MOST EFFICIENT
LAYOUT BY MAPPING
YOUR 'KITCHEN
TRIANGLE'**

- THE SHORTEST ROUTE
BETWEEN YOUR HOB,
SINK AND FRIDGE.

*EXAMPLE LAYOUTS ARE BASED AROUND A TYPICAL SEMI-DETACHED PROPERTY.

THE KNOCK-THROUGH



APPROX. ROOM DIMENSIONS
5.5M WIDTH 3M DEPTH

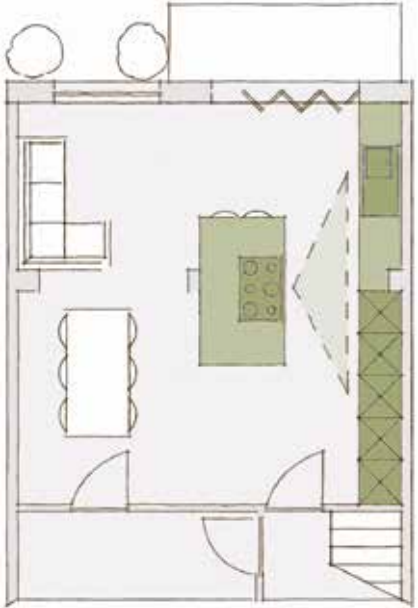
Knocking your kitchen through to an adjacent room increases your floor space and the number of layout possibilities without extending. Combining two zones into one e.g. kitchen and dining, creates a larger social space without necessarily requiring more kitchen furniture.

A U shape with a peninsular (breakfast bar), is often the go-to layout for a knock-through – enabling both bar seating and a formal dining table. Maintaining a similar level of furniture as before, it creates a subtle divide, allowing interaction with family/guests without disturbing the cooking area.

Incorporating dining room furniture, such as a dresser or breakfast station, also provides extra storage whilst keeping the kitchen free for cooking/preparation.

Alternatively, an L or G shaped layout can work just as well, and in some cases a small island can even be incorporated (typically offering extra surface area for preparation).

THE EXTENSION



APPROX. ROOM DIMENSIONS
5.5M WIDTH 6M DEPTH

Extending your home and kitchen area creates the maximum level of flexibility. Often combining up to three or four areas into one, e.g. kitchen, dining, living, playroom, office etc., an extended kitchen area can be an extremely multi-functional space.

Usually allowing for a generous island with integrated appliances/sink, the space is yours (often without too much restriction) to choose almost any layout to suit your needs.

You can often include bigger design statements too, in both size and function, such as a pantry, an American fridge-freezer or wine cooler - often with the ability to include expansive worktops, as well as full height wall-to-wall cabinetry too.

Often opening up the entire back wall of your home, an extension can truly connect you with your garden for the ultimate in indoor-outdoor living. But the ultimate beauty of having such a large space is its flexibility to adapt and grow with you as your home needs change.

We hope that you feel inspired, and are a little closer to visualising your dream kitchen in your own home. Whatever the shape and size of your space, our team of design experts are ready to discuss bringing your kitchen dreams to reality.

BEAUTIFUL ON THE INSIDE

KESSEBÖHMER

KONFIGURE
BY KESSEBÖHMER

Gollinucci
DESIGNED FOR EVERY DAY

blum

sensio
furniture lighting solutions

TOP TIPS

THE KITCHEN TRIANGLE

The primary tasks in your kitchen are carried out between the hob, the sink and the fridge. The triangle that connects these three areas defines what kitchen experts call an 'efficient kitchen layout'. The triangle is the shortest, most effective way to tread between these three areas and should be considered in your new kitchen design.

GROUP SIMILAR FUNCTIONS

Consider grouping the functions of your kitchen and planning your storage accordingly. There's no point in placing a spice rack metres away from the hob. Specialist trays and inserts for our range of base units and pull outs, help you to create order with a designated place for everything.

THE PERFECT SERVE

Try to imagine where you're most likely to serve up your meals. This is a great place to store your cutlery, plates and bowls. Take advantage of our wide range of drawer inserts and modular dividers, to help make meal times quicker, with everything kept conveniently to hand.

DON'T BE AFRAID OF HEIGHTS

Many British homes enjoy high ceilings and utilising this extra space should be a priority in all kitchen schemes. Consider doors that open upwards or ask your MOOD designer about our clever iMove units which allow you to bring the contents of high cupboards down to eye level.

Sensio Primo Light

Configure Drawer Inserts

Kesseböhmer 300mm Anthracite
Style Larder
KSALF300FEA

Kesseböhmer Anthracite Double Shelf
iMove KIMOVE600DA

Kesseböhmer 500mm
Right Hand LeMans Anthracite Style
KSA2LM500AR

Gollinucci Anthracite
600mm Bin
571/6050-GY

Kesseböhmer 600mm
Anthracite Style Base Pull-Out
KSABP600A

Doors: MOOD's Brundle in Espresso and Stone.
Worksurfaces: Neolith Strata Argentum

Designing a great kitchen is a complicated task with many things to take into consideration. Storage is often overlooked, but the inside of your cabinets is as important as your door and drawer fronts.

LARDER STORAGE

KEEPING EVERYTHING CLEARLY IN SIGHT

Getting to the things at the back of your cupboards can be a real hassle. Our larders put everything clearly in sight, with an innovative system which moves the whole contents of the cupboard towards you. With quick and easy access to all your items, you'll never lose anything again, or find out-of-date ingredients lurking at the back of your cupboards. Less food will go to waste, which will save you money.



CORNER STORAGE

ORDER AND ACCESS FOR THE DARKEST SPACES

Make dark and dingy corners a thing of the past with our best-selling corner storage solutions. Utilising clever engineering, they smoothly bring the very depths of these corner cupboards all the way out to you.



WALL STORAGE & PULL OUTS

ACCESS ALL AREAS

Make use of your full ceiling height, and never struggle to reach your items again. Integrate a handy wall storage solution, cleverly designed to bring the whole contents of your wall cupboards within easy reach. Alternately, bespoke shelving units can provide additional, open storage space.

Make everyday tasks a breeze, with our smart range of under the counter storage solutions. Designed to maximise and organise every inch of your cupboard space, we've thought of everything - from handy removable cleaning baskets, to neat spice rack pull-outs which are perfect for keeping close to your hob.



THESE ARE JUST A SMALL SELECTION OF THE HANDY STORAGE SOLUTIONS WE HAVE AVAILABLE. VISIT US IN STORE TO EXPLORE OUR FULL RANGE.

DRAWERS

The inside of your kitchen deserves to be just as beautiful and practical as the outside. So, once you've chosen your fronts, why not continue your style right through to the insides, with one of our high quality, and simply stunning drawer box ranges? Choose a complementary colour and finish for a considered, seamless look. Add inserts and accessories to keep you organised, with hidden double drawer options, allowing to make full use of the space and height, whilst maintaining a deep drawer look.



THESE ARE JUST A SMALL SELECTION OF THE HANDY DRAWER SOLUTIONS WE HAVE AVAILABLE.
VISIT US IN STORE TO EXPLORE OUR FULL RANGE.

WASTE BINS & RECYCLING

Disposing of our waste responsibly is a key concern in many households. Whether you need a single unit for under the sink, or a bigger multi-compartment unit to help separate out your recycling items, we've got a solution to help. Available with up to four compartments, our bins seamlessly integrate into any kitchen design, making your waste management an easy part of daily life.



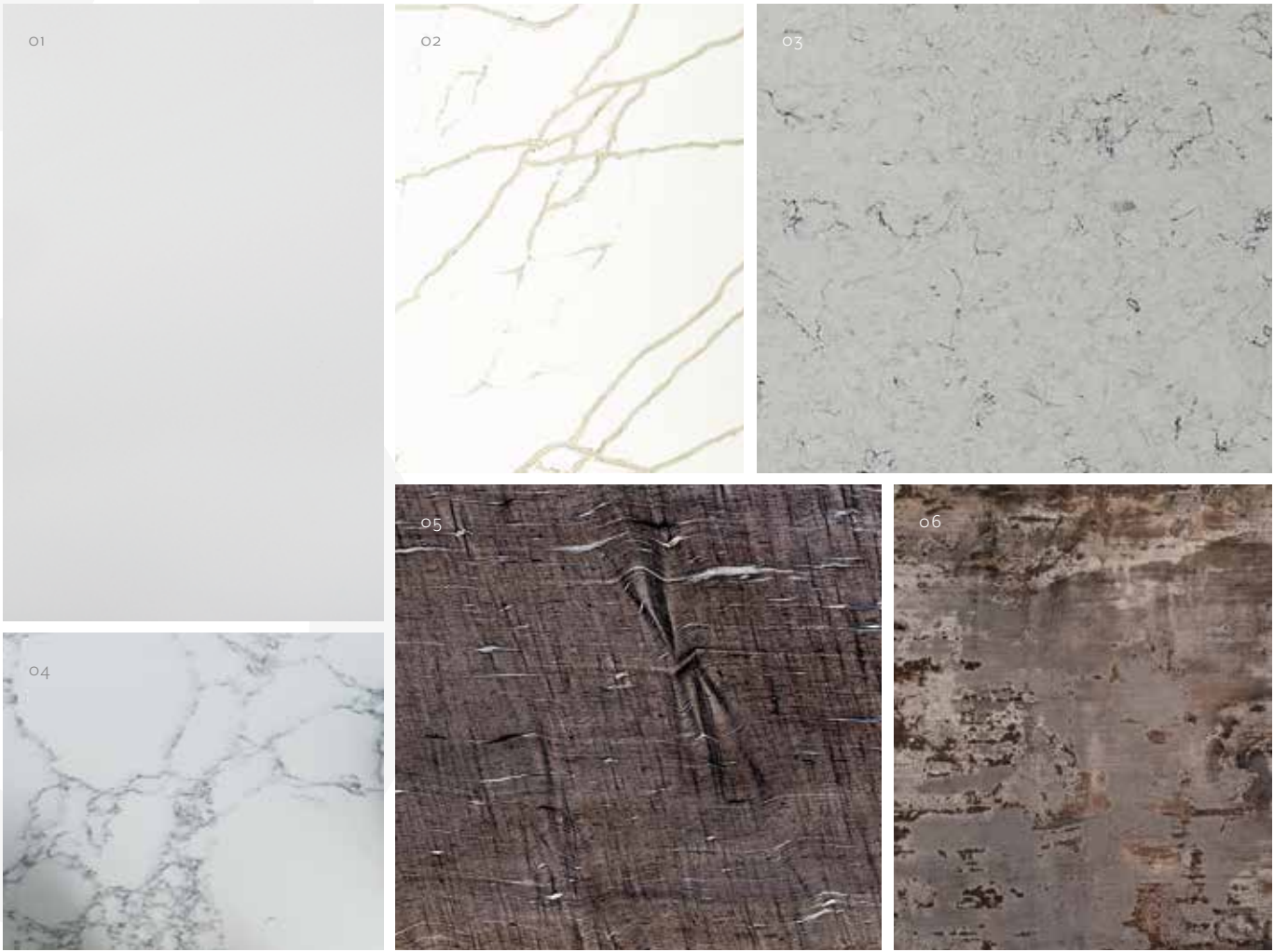
EXPLORE OUR FULL RANGE OF BINS, RECYCLING AND OTHER HOUSEHOLD ITEMS IN STORE.

WORKSURFACES



Selecting the right worksurfaces is essential for creating a kitchen that not only looks great but also suits your lifestyle. Our beautiful collection of worksurfaces offers something for every home in a wide variety of materials, patterns, shapes and finishes.

Here you'll find a small selection of worksurfaces to help inspire you, discover a wider selection of materials in store.



01. Brilliant White 02. Calacatta Gold 03. Arctic Storm 04. White Venato 05. Rippled Mink 06. Trillium



07. Rustic Oak 08. Oak End Grain 09. Oak Herringbone 10. Black Cosmic 11. Grey Mirror 12. Silver Waves Leather

HELPING YOU MAKE THE PERFECT CHOICE

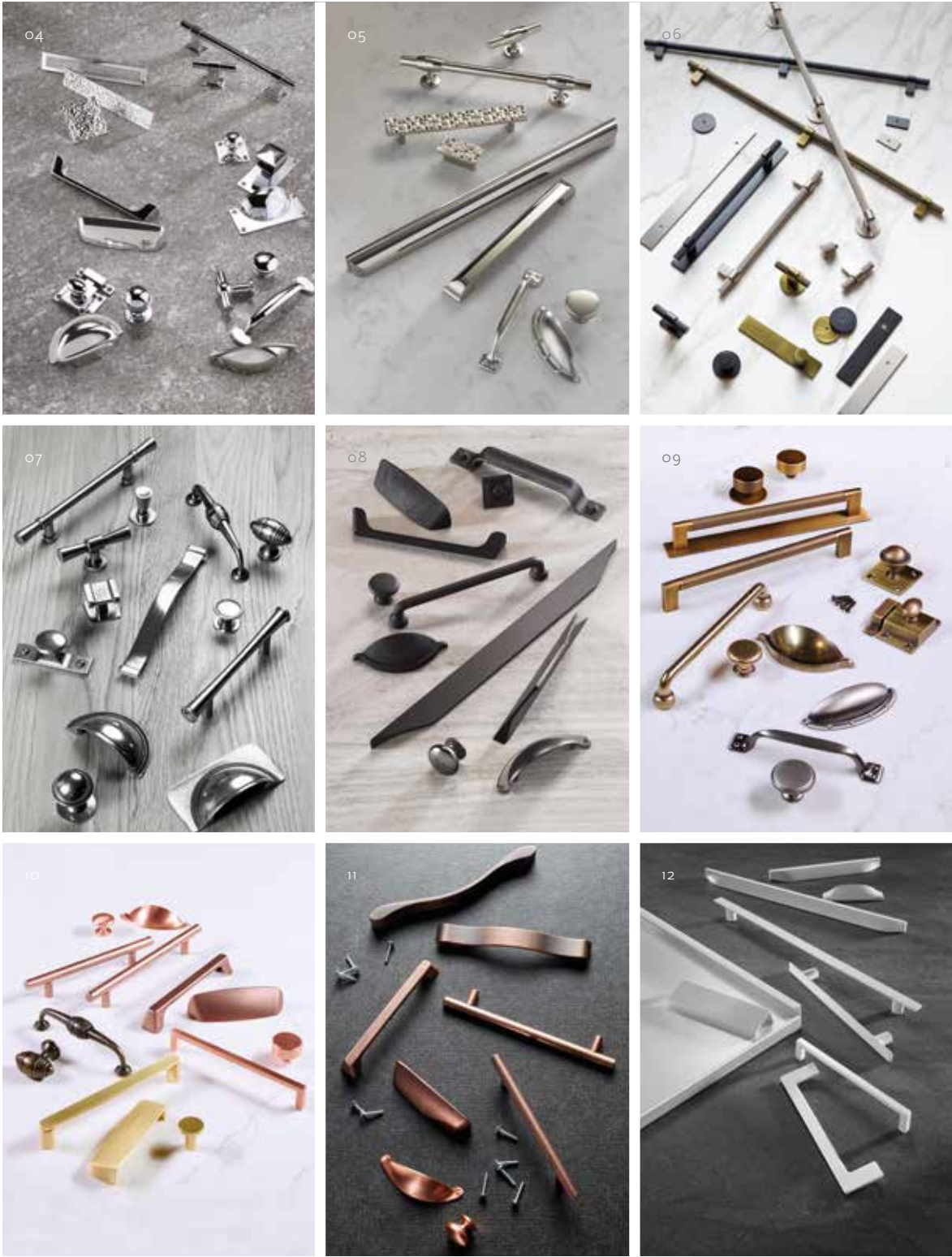
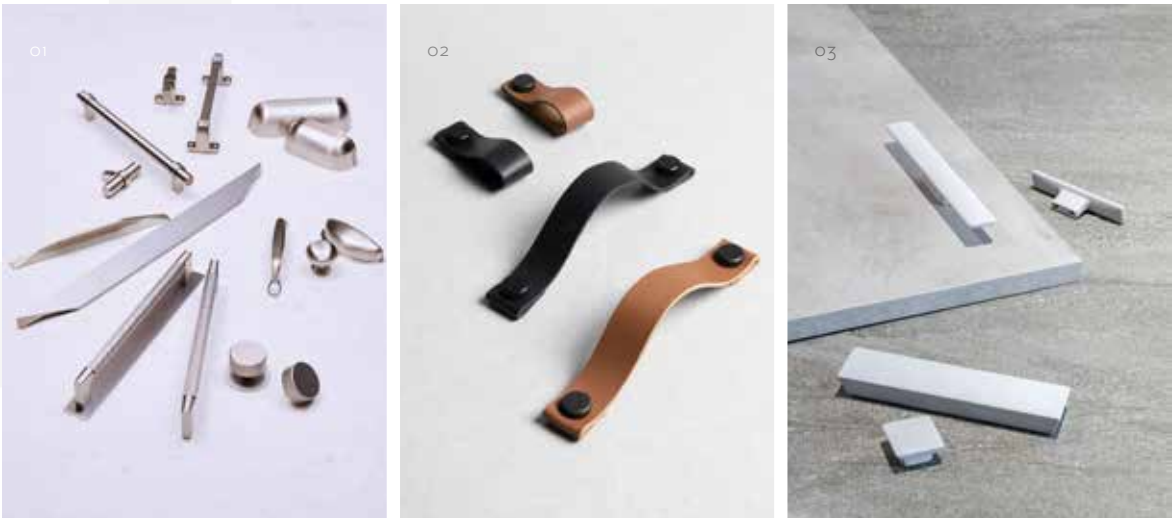
Your worksurface is a big part of your overall kitchen look, but also needs to stand up to the rigours of daily life. Whether you choose granite, quartz, timber, acrylic or an ultra compact material - or even mix up your materials for a really personalised look - your MOOD designer is there to help you choose a worksurface that not only complements your dream kitchen, but your lifestyle too.

HANDLES

Although small, handles play a big part in determining your overall kitchen look. Whether strong and structured, simple and contemporary, elegant and characterful, or full of exciting texture, our extensive handle collection offers something for every style and taste.

Here is just a small selection to inspire your kitchen design, speak to your MOOD designer to discover even more handle options.

ASK YOUR MOOD DESIGNER FOR MORE IDEAS AND INSPIRATION.



HELPING YOU MAKE THE PERFECT CHOICE

Choosing the right kitchen handles can really help to add your own personality and flair into your design - whether you choose one style or mix it up with several!

Of course your MOOD designer is there to help you make a stunning choice which will perfectly complement your kitchen, and create a striking finish in your space.

01. Stainless Steel Effect 02. Leather 03. Concrete 04. Chrome 05. Nickel 06. Knurled 07. Pewter 08. Black 09. Antique 10. Warm Metallics 11. Copper 12. White

HANDLELESS TRIMS

Our collection of ‘true handleless’ kitchens feature an ultra-modern, linear, handleless trim. This smart rail system sits neatly between the door and cabinet to create a void that enables you to reach in and easily open the cupboard. This simple yet effective system not only functions seamlessly, but can also completely transform the overall look and feel of your kitchen when applied in any of our striking colours and finishes - creating an eye-catching design that is all about clean, uninterrupted lines.

We offer five unique handleless trim finishes for you to choose from. Whether you opt to pair your trim with matching doors to create a seamless, continuous look, or combine it with contrasting colours for a bold, individual style, our handleless trim can create a truly distinctive kitchen with a personal touch.

MATT WHITE



APPLICATION

Our handleless trims are for use with any of our ‘true handleless’ ranges including Hartland, our handleless Shaker, Verona, our best selling slab door, our Monaco made-to-measure ranges, and our premium, highly textured, Imperia veneer doors.

MATT GRAPHITE



ALUMINIUM



METALLIC BRASS



METALLIC COPPER



ASK YOUR MOOD DESIGNER FOR MORE IDEAS AND INSPIRATION.

LIGHTING

Lighting is no longer just a kitchen accessory, it's a necessity. Creating a tailored lighting plan in the early stages of your kitchen design, will not only make your space feel lighter and brighter, but it can add that all important wow-factor. Don't worry, your MOOD designer is there to help you to make those all important lighting choices - but here are some of the key design elements to consider.

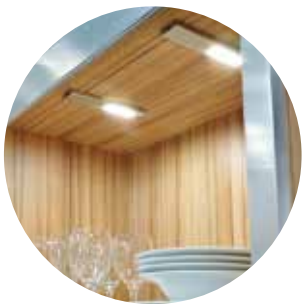
WHAT DO I NEED & WHERE?

In selecting the most appropriate lighting for the various tasks being carried out in your kitchen, a good place to start is considering these three key lighting environments – Task, Mood and Convenience.



MOOD LIGHTING

Also referred to as feature, decorative or accent lighting, mood lighting is used to add dimension and depth to the room in order to create atmosphere and provide personality.



CONVENIENCE LIGHTING

Convenience lighting has a more specific purpose. It is directional and intended to be focused towards a specific area or to be used for a particular job in drawers or in cabinets.



TASK LIGHTING

Task lighting provides effective light to undertake everyday activities such as food preparation. Perfectly positioned, task lighting makes the kitchen an efficient working space.

WARM WHITE VERSUS COOL WHITE

The colour that you choose for your kitchen can make a huge impact!



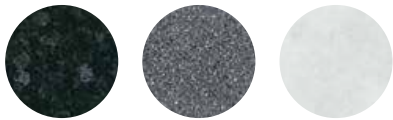
WARM WHITE

Warm white lighting pairs beautifully with deep, rich tones and woodgrains.



COOL WHITE

Cool white lighting can perfectly compliment a monochrome, light neutral, or minimal palette.



PROVIDING ILLUMINATING IDEAS

Your MOOD designer will take you through our full lighting collection in store. Whether you already have your own ideas, or would like to be inspired, together we'll help to breathe light and excitement into your kitchen design.

ASK YOUR MOOD DESIGNER FOR MORE IDEAS AND INSPIRATION.

APPLIANCES, SINKS & TAPS

Designing a kitchen isn't just about the look, it's about creating a practical and functional space that works for you – and appliances are a key part in getting this right.

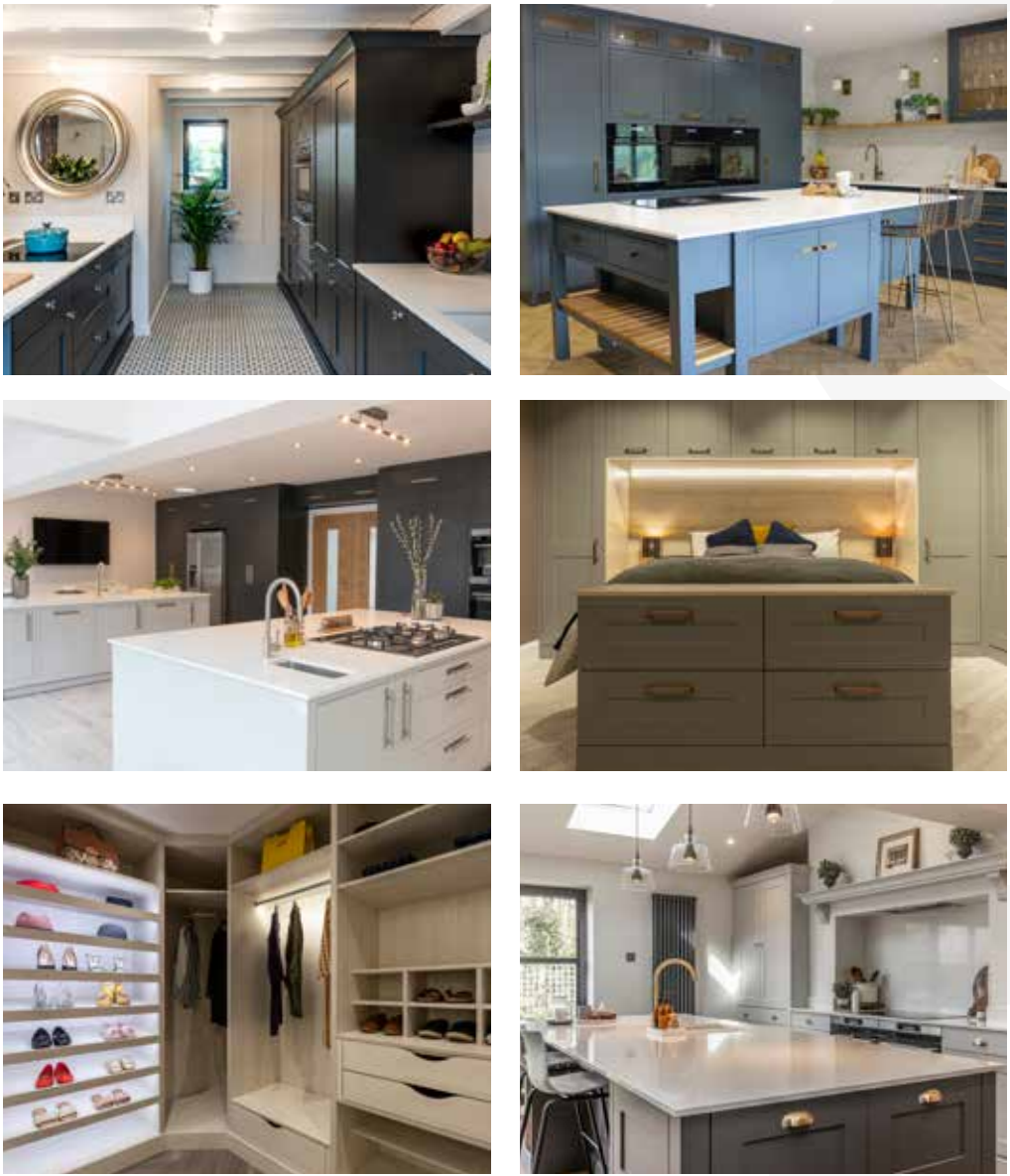
Whether you're a keen cook, a fan of gadgets, or like to keep things simple, your local MOOD designer, will help you make the right choices to suit your lifestyle, and seamlessly integrate them into your design.



REAL KITCHENS

Seeing a real example of how a design could look in your own home, can often be the reassurance and confidence you need to make that final decision.

Explore a range of our latest MOOD kitchens and bedrooms in real homes across the UK.



M | O | O | D
KITCHENS
UK MADE